

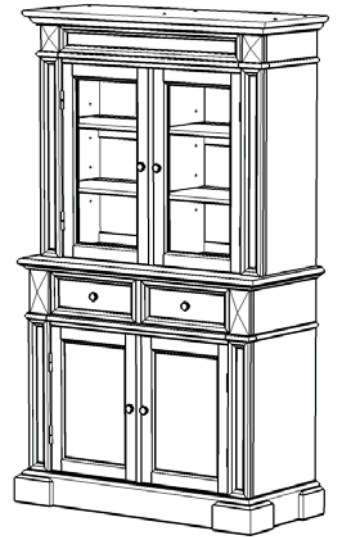
# 88 5004 307 Hutch

## IMPORTANT NOTE

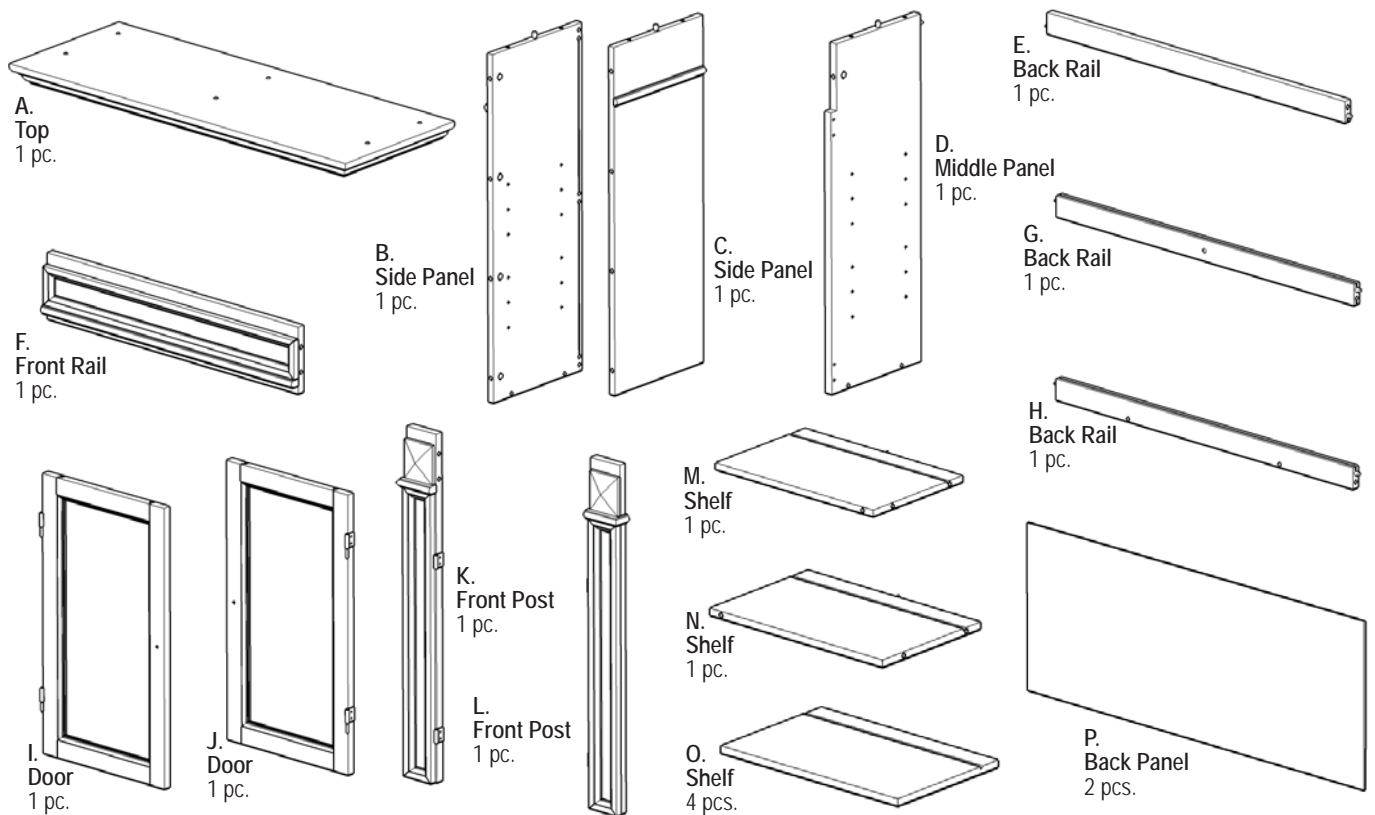
Carefully remove all the parts from the carton and put them individually on a soft cloth to prevent scratches or other damages occurring to the wood parts.

We have taken great care in the design of this product and request that you carefully and strictly follow our assembly instructions to ensure a completed product as it was designed.

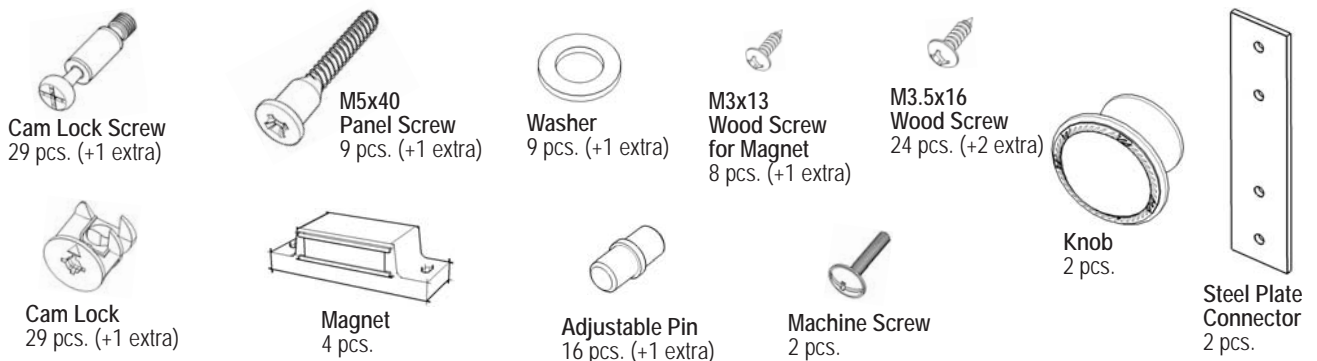
*Home  
Styles*



## Part List



## Hardware List



Tools required for assembly : Phillips screwdriver

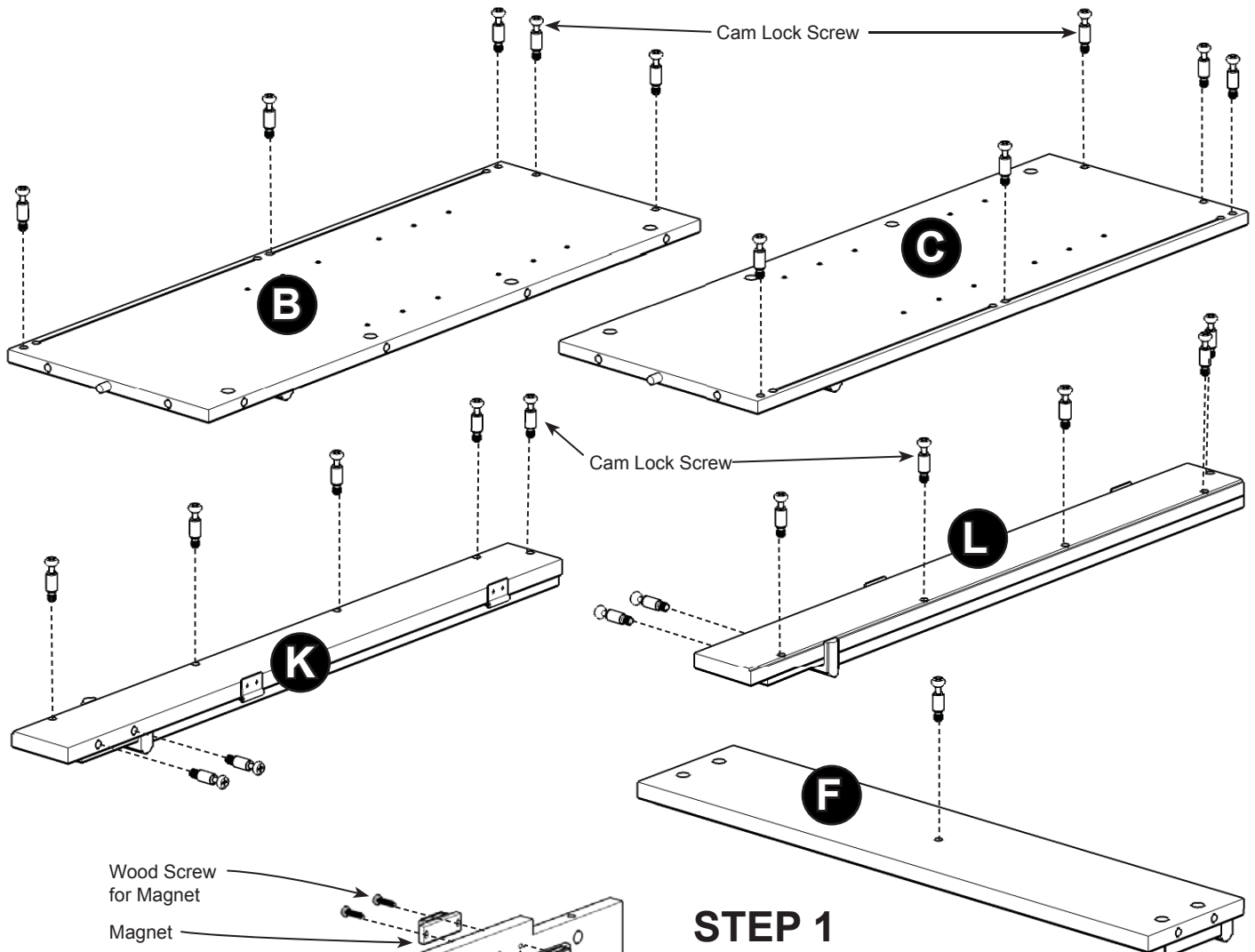
Tools recommended for assembly : Level

Home Styles Consumer Assistance: [www.homestyles-furniture.com](http://www.homestyles-furniture.com),  
servicedesk@homestyles-furniture.com, 888-680-7460, 877-831-0319

# Assembly Instruction 2 / 6

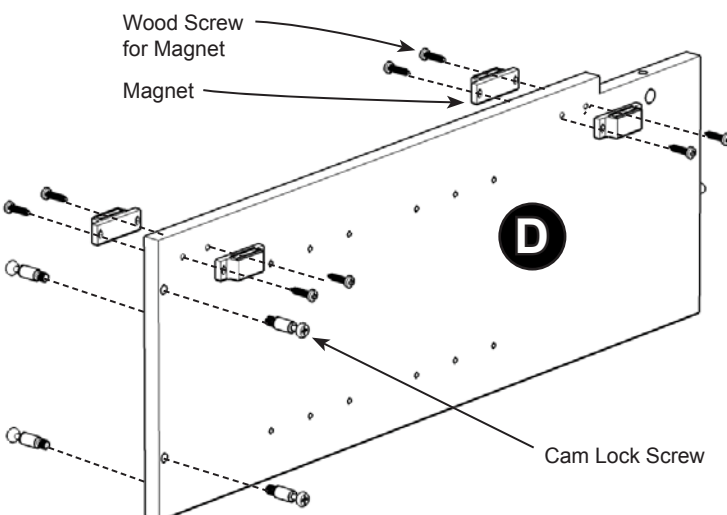
## IMPORTANT

- \* Do not tighten up all the screws until each part is properly assembled.
- \* Use a soft cloth between these parts and the floor.
- \* After assembly, item must be level to work properly. Use the included adjustable levelers to level.



## STEP 1

Insert Cam Lock Screws into the pre-drilled holes in Side Panels (B), (C), Front Posts (K), (L) and Front Rail (F). (see Figure 1)



## STEP 2

Insert Cam Lock Screws into the pre-drilled holes in Middle Panel (D).

Attach Magnets to Middle Panel (D) with Wood Screws for Magnet. (see Figure 2)

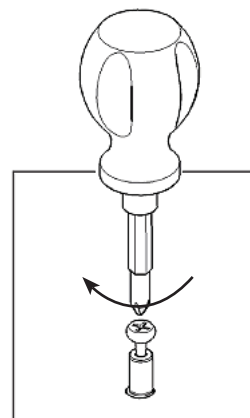


Figure 1

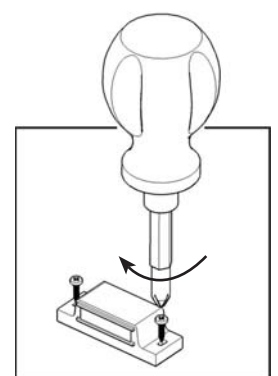


Figure 2

## STEP 3

Attach Back Rails (E), (G) and (H) to Side Panel (C) with Cam Locks.  
(see Figure 3)

Slide Back Panel (P) into the grooves in Side Panel (C) and Back Rails (E), (G), (H).

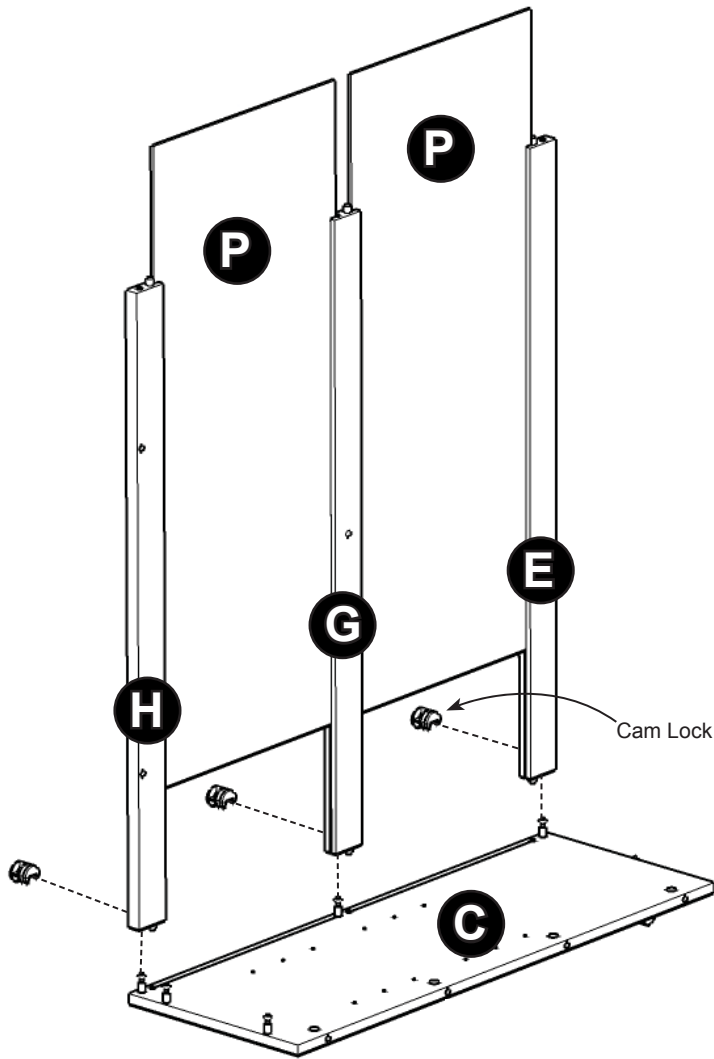


Figure 3

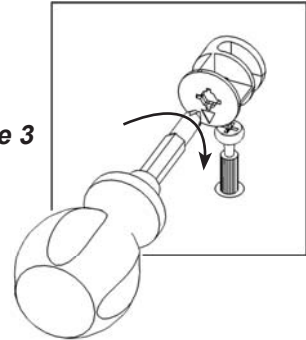
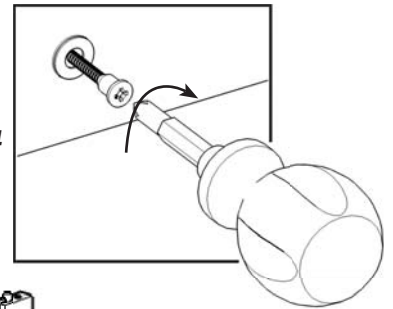


Figure 4



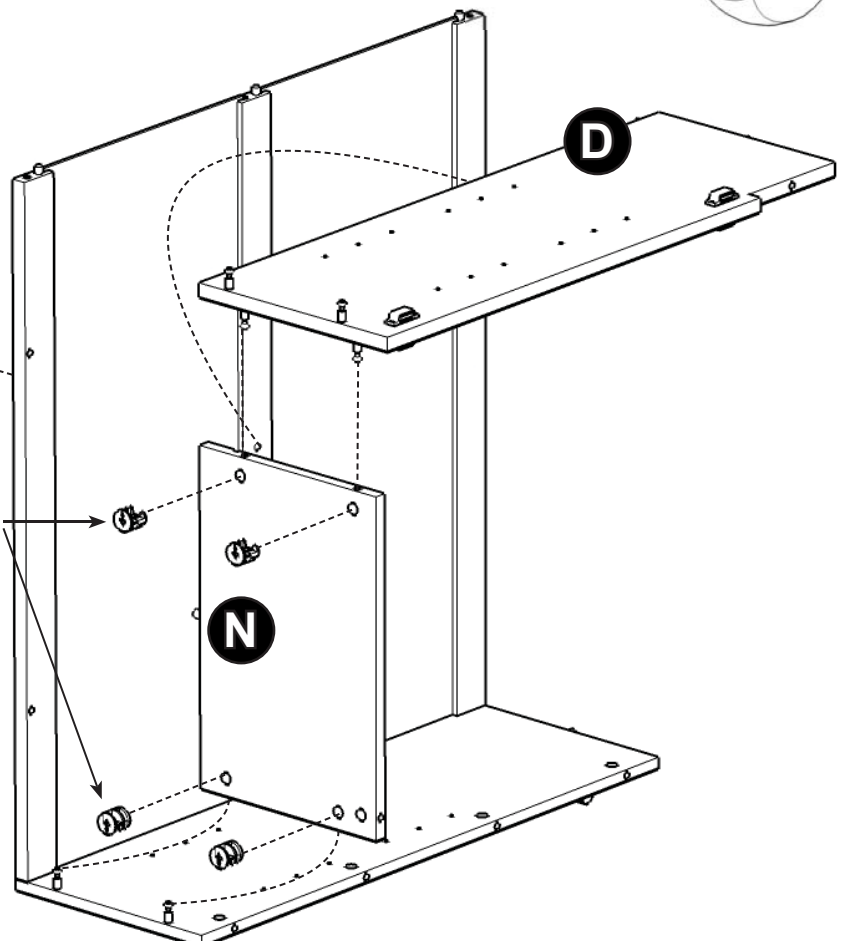
## STEP 4

Attach Shelf (N) to unit with Cam Locks.

Attach Middle Panel (D) to unit with Cam Locks, Washer and Panel Screw. ( see Figure 4)

Panel Screw  
Washer

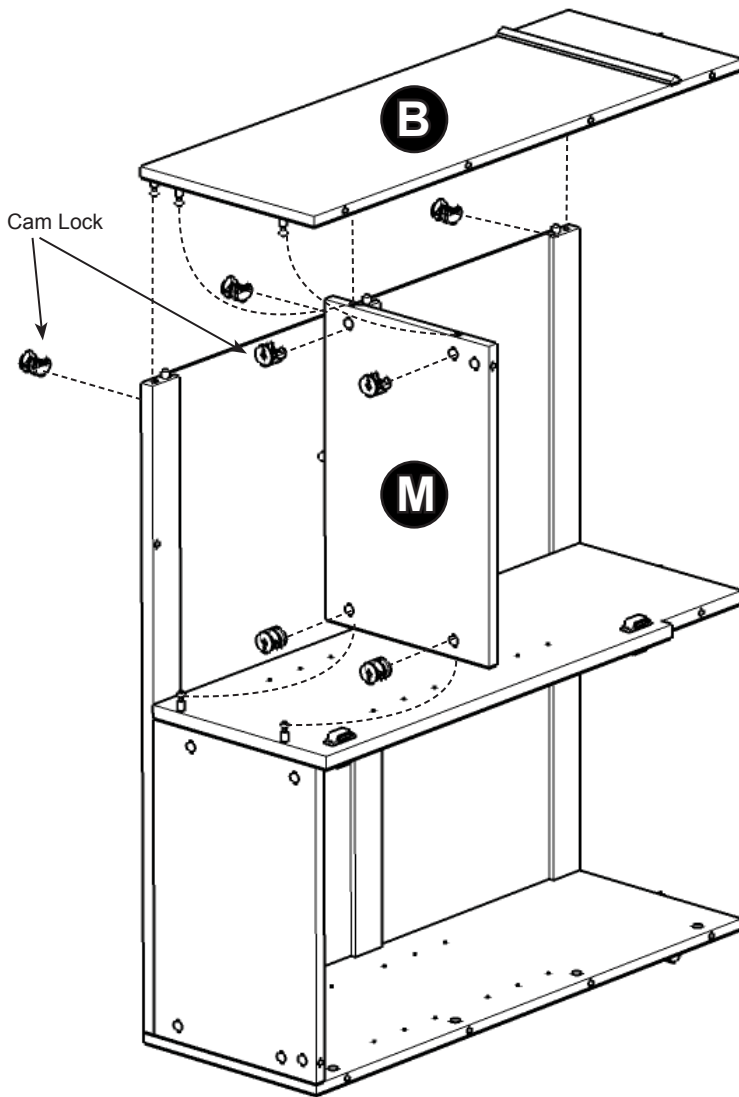
Cam Lock



## STEP 5

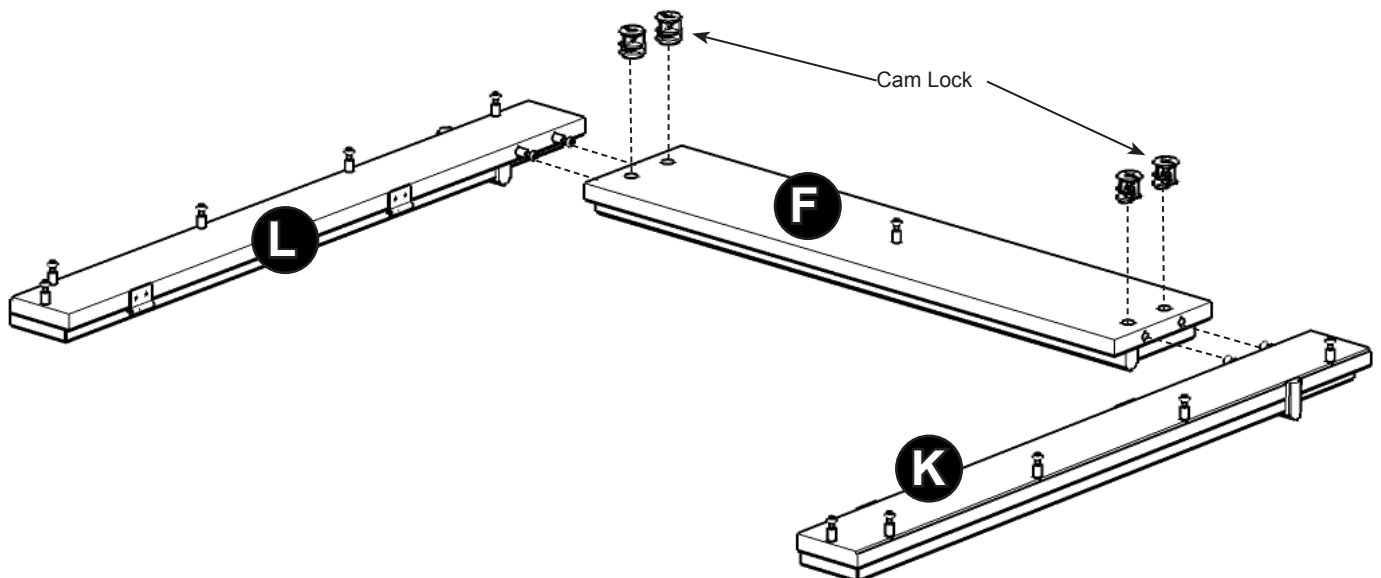
Attach Shelf (M) to unit with Cam Locks.

Attach Side Panel (B) to unit with Cam Locks.



## STEP 6

Attach Front Posts (K) and (L) to Front Rail (F) with Cam Locks.



## STEP 7

Attach unit from Step 5 to unit with Cam Locks.

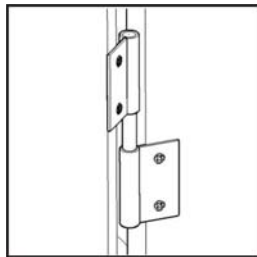
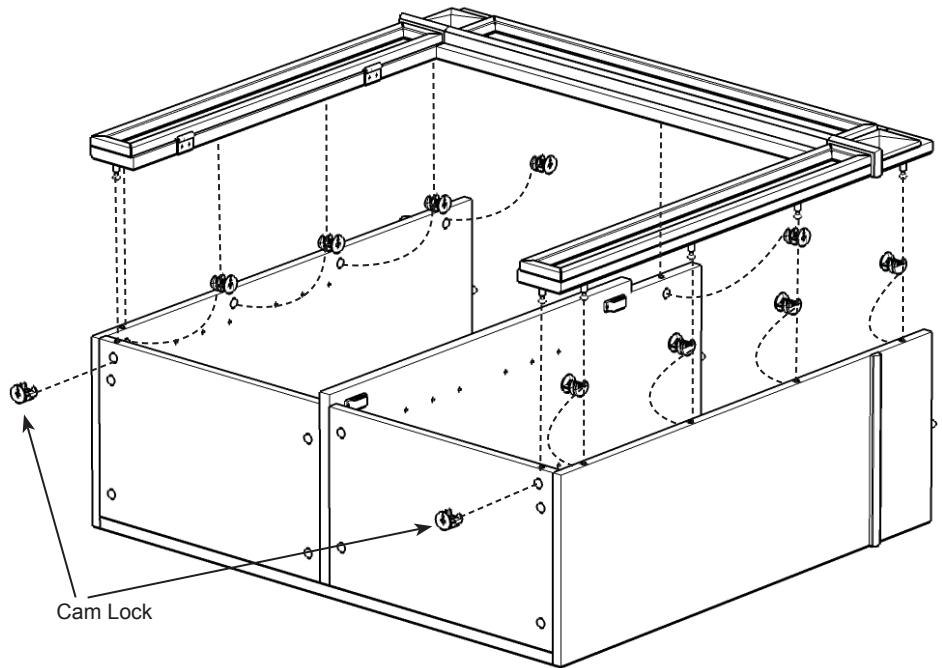


Figure 5

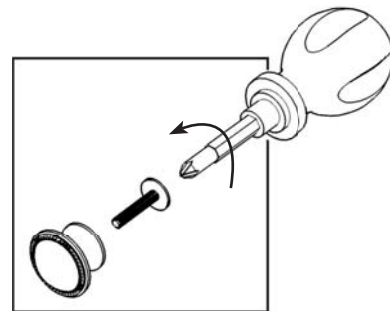
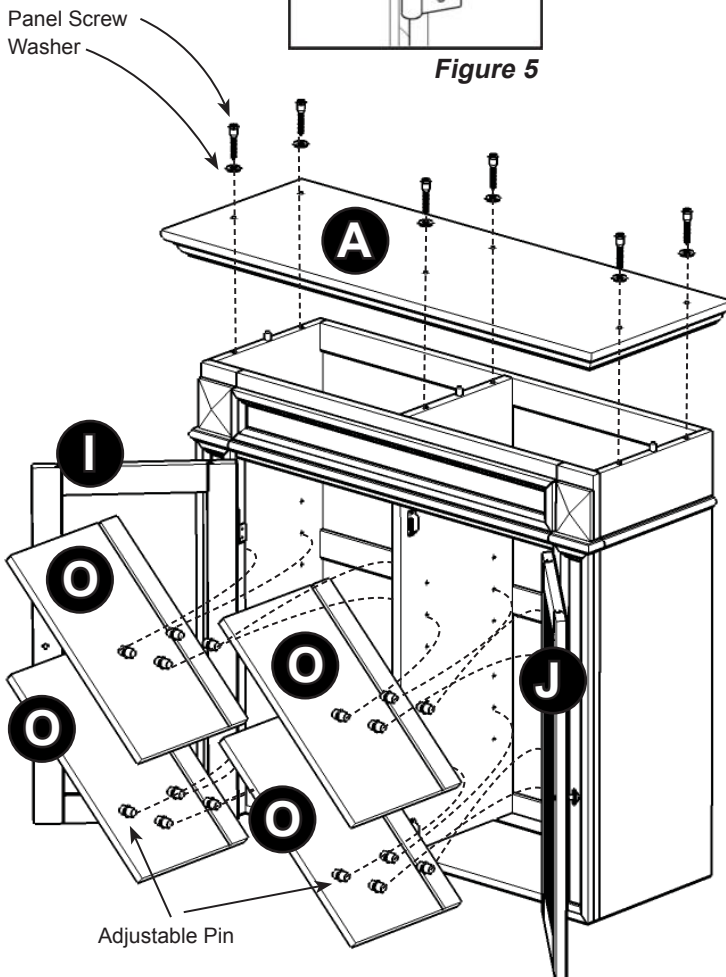


Figure 6



## STEP 8

Place Top (A) onto the unit and attach with Washers and Panel Screws.

Insert Adjustable Pins into the side panels at the desired level.

Place Shelves (O) into position.

Attach Doors (I) and (J) to the side panels by sliding the door lift hinges into the side panel lift hinges. (see Figure 5)

Assemble Knobs to Door (I) and (J) with Machine Screws. (see Figure 6 )

## STEP 9

Insert 16X Wood Screws from the back of the unit. (see Figure 7)

**Note: Please make sure unit is level before tightening these screws.**

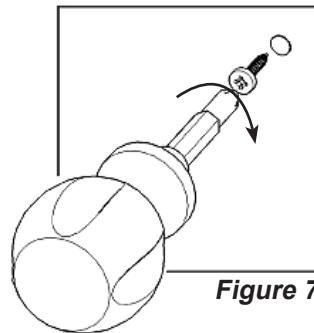
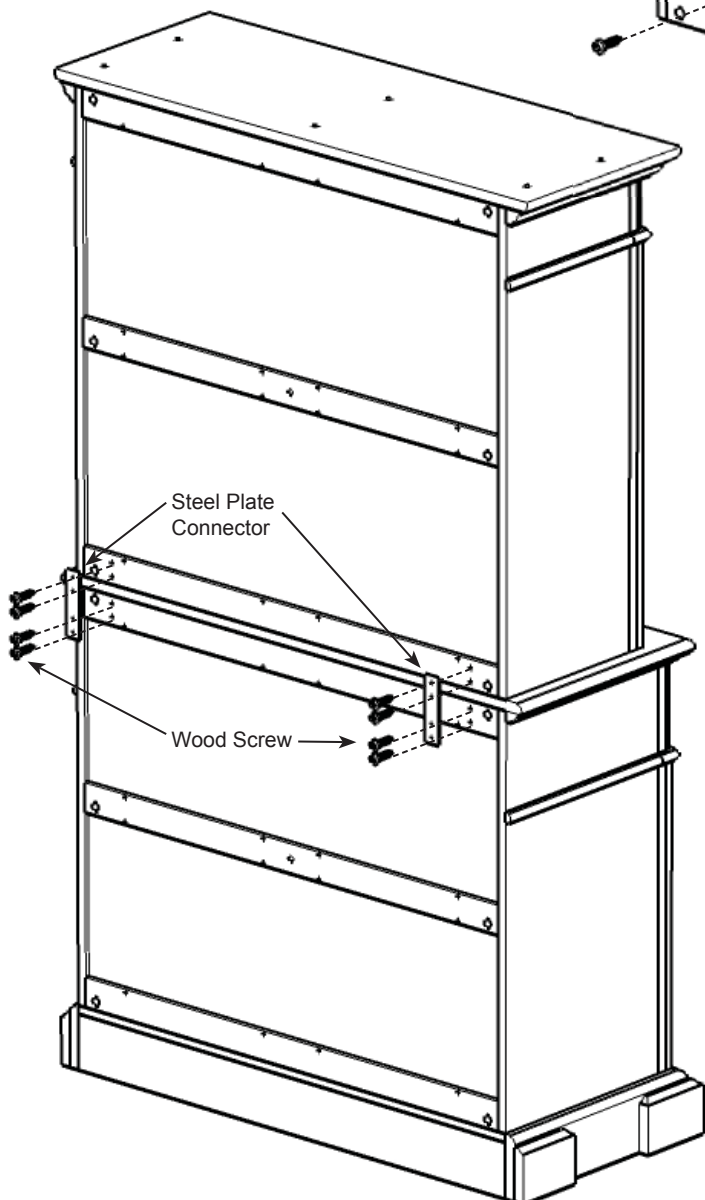
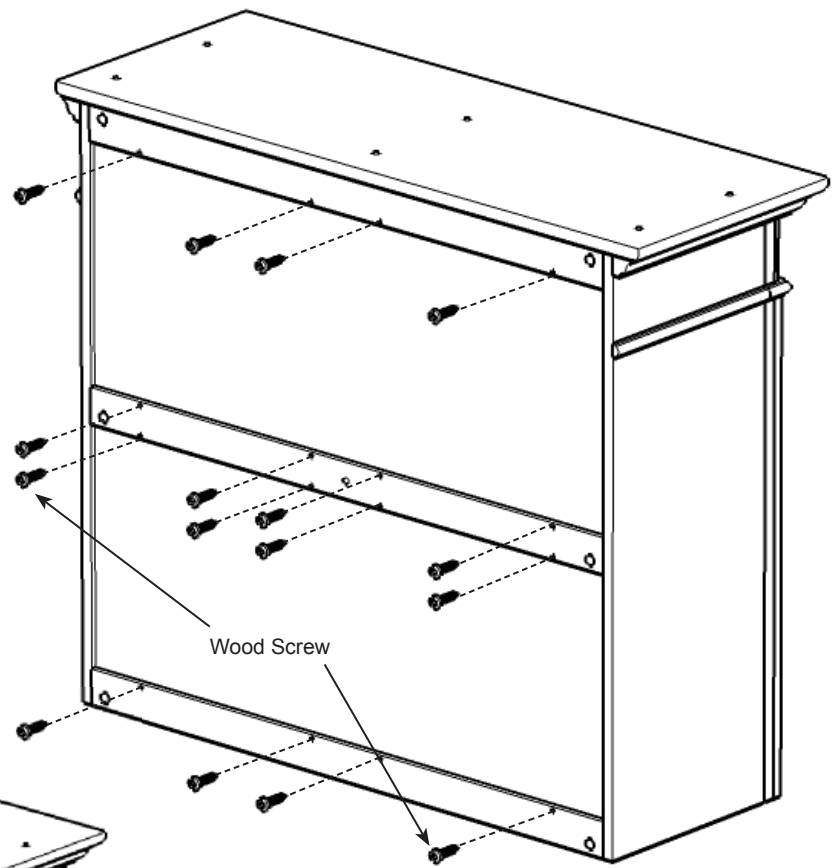


Figure 7

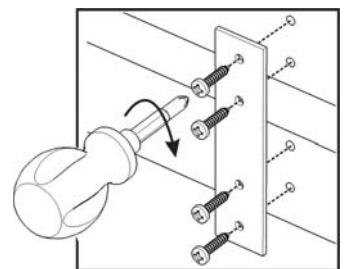


Figure 8

## STEP 10

Place the Hutch unit onto the Buffet unit.

Attach Steel Plate Connectors with Wood Screws. (see Figure 8)