

88 5522 101

Solid Wood Top

IMPORTANT NOTE

Carefully remove all the parts from the carton and put them individually on a soft cloth to prevent scratches or other damages occurring to the wood parts.

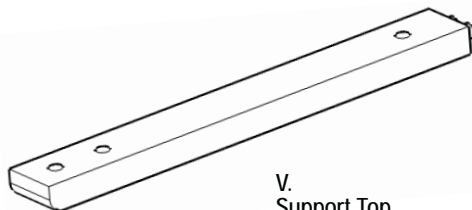
We have taken great care in the design of this product and request that you carefully and strictly follow our assembly instructions to ensure a completed product as it was designed.

*Home
Styles*

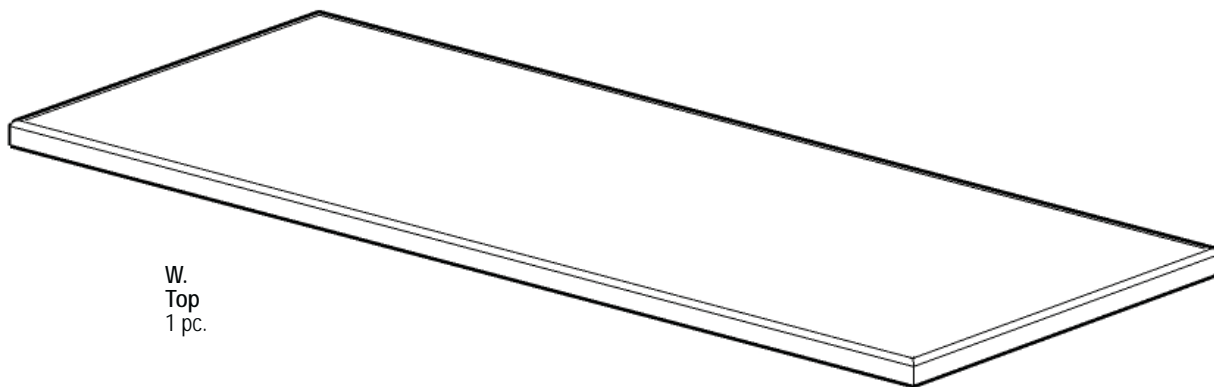


Top Assembly Instructions

Part List



V.
Support Top
2 pcs.



W.
Top
1 pc.

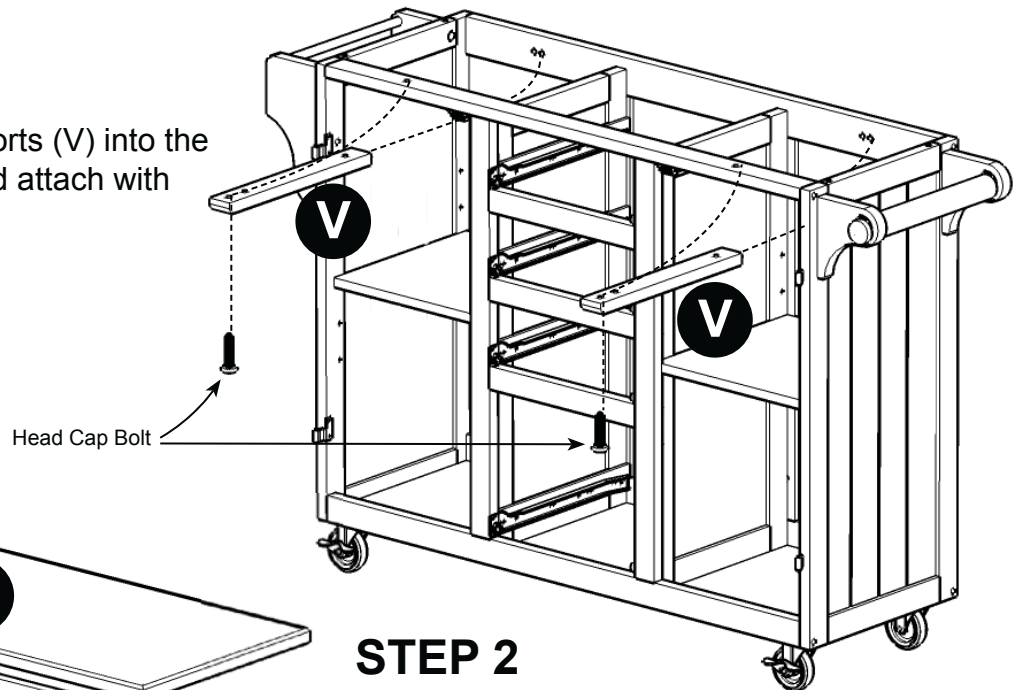
Hardware List



M6x30
Head Cap Bolt (long)
6 pcs. (+1 extra)

STEP 1

Put back end of Top Supports (V) into the pre-drilled holes in unit and attach with Head Cap Bolts.



STEP 2

Place Top (W) onto the unit and then tighten all Head Cap Bolts.

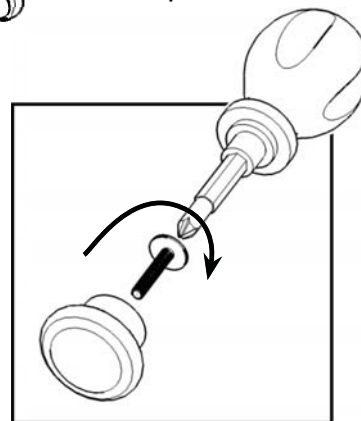
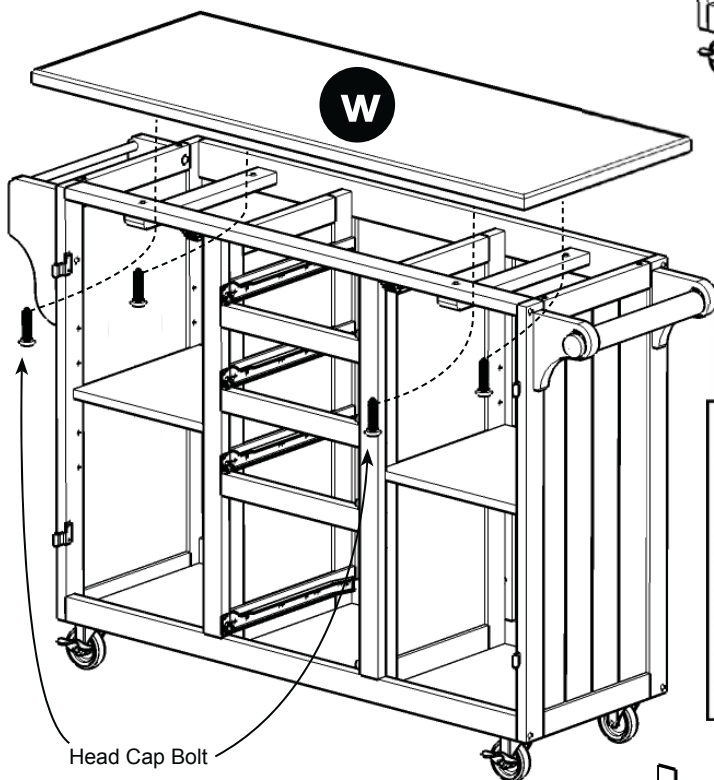


Figure 1

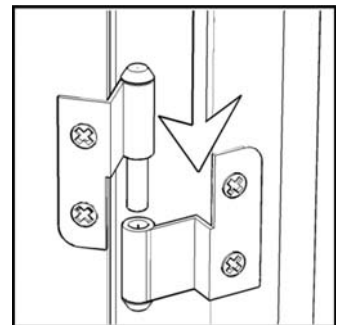


Figure 2

STEP 3

Attach Pull Handles to Doors (N) and (O) using Machine Screws. (see Figure 1)

Attach Doors (N) and (O) by sliding door lift hinges into the side panel lift hinges. (see Figure 2)

Slide Drawers (T) and (U) into place.

