

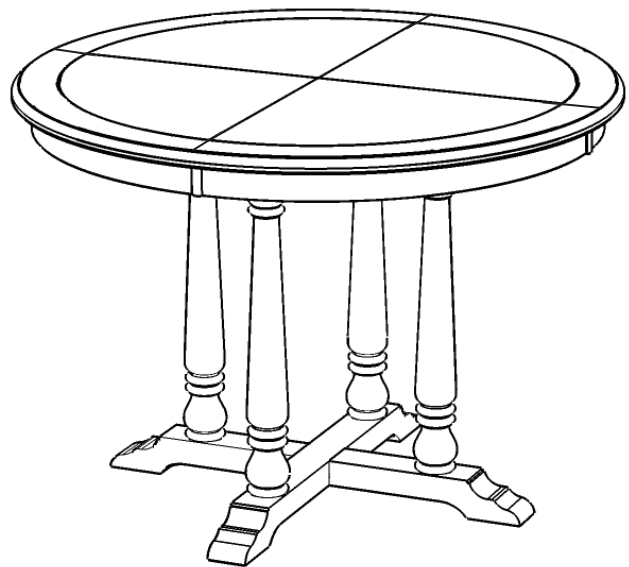
88 5522 30 Dining Table

IMPORTANT NOTE

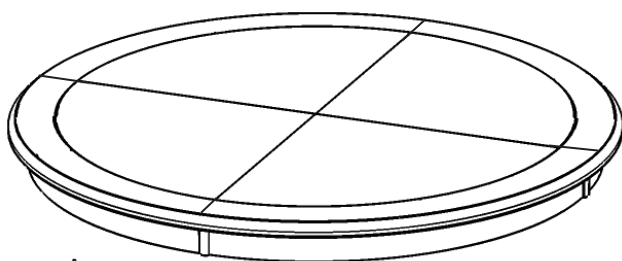
Carefully remove all the parts from the carton and put them individually on a soft cloth to prevent scratches or other damages occurring to the parts.

We have taken great care in the design of this product and request that you carefully and strictly follow our assembly instructions to ensure a completed product as it was designed.

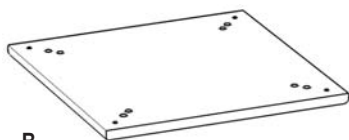
*Home
Styles*



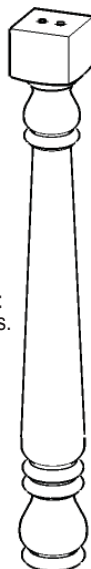
Part List



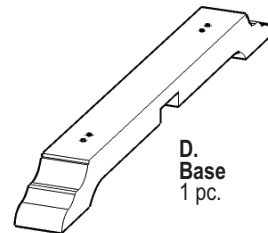
A.
Top
1 pc.



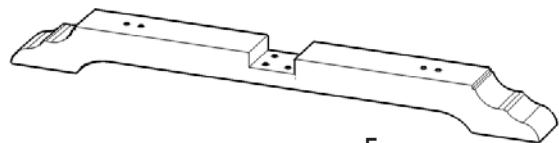
B.
Connector Panel
1 pc.



C.
Post
4 pcs.

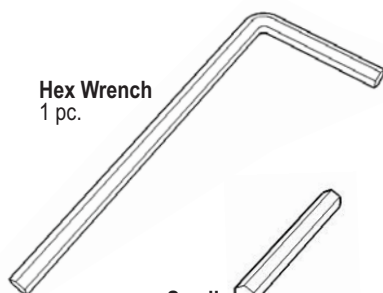


D.
Base
1 pc.



E.
Base
1 pc.

Hardware List



Hex Wrench
1 pc.



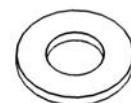
**Small
Hex Wrench**
1 pc.



**M6x30
Head Cap Bolt (short)**
8 pcs. (+1 extra)



**M6x50
Head Cap Bolt (long)**
16 pcs. (+1 extra)



**Flat
Washer**
24 pcs. (+ 2 extra)



**Spring
Washer**
24 pcs. (+2 extra)

Tools recommended for assembly: Level

Home Styles Consumer Assistance Line 888-680-7460 and 877-831-0319
servicedesk@homestyles-furniture.com

IMPORTANT

* You should keep Hex Wrench in a safe place as you may need to tighten up the Head Cap Bolts in the future.

* After assembly item must be level to work properly. Use the included adjustable levelers to level.

STEP 1

Place Bases (D) and (E) upside down on a soft cloth.

Attach Base (E) to Base (D), using Flat Washers, Spring Washers and Head Cap Bolts (short). (see Figure 1)

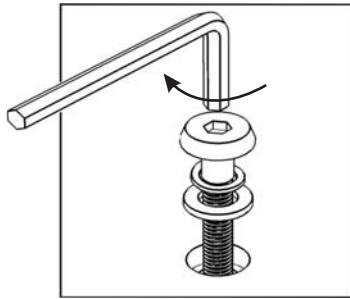
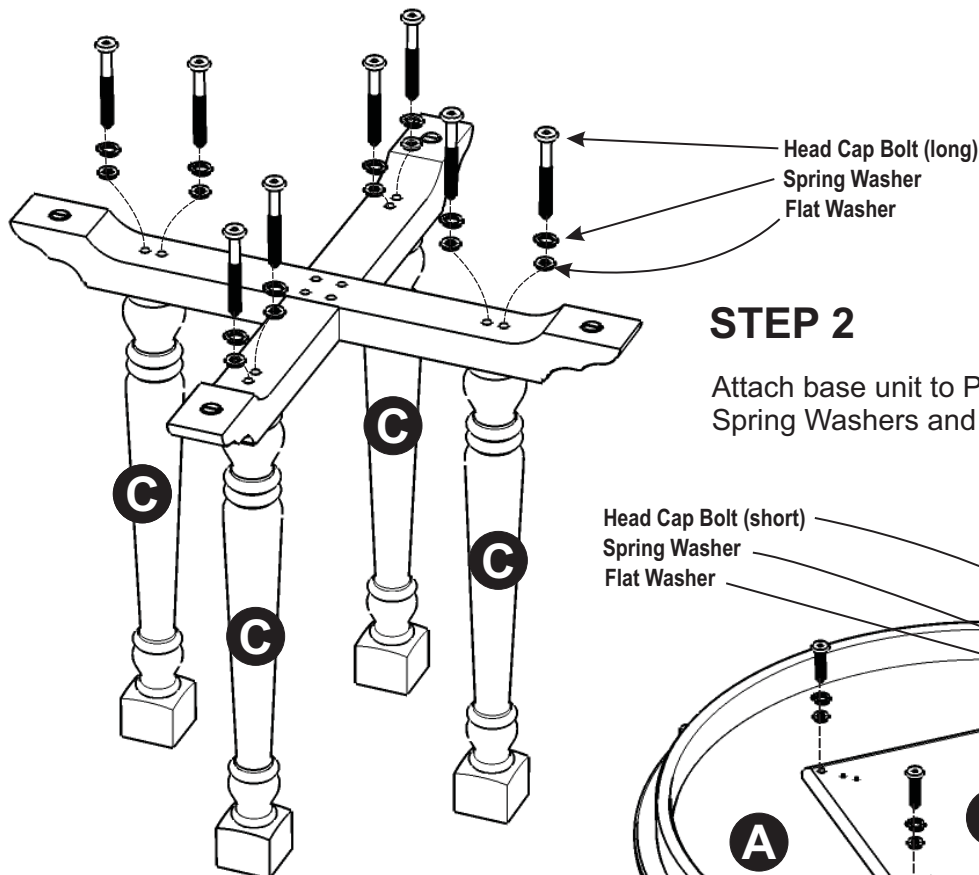
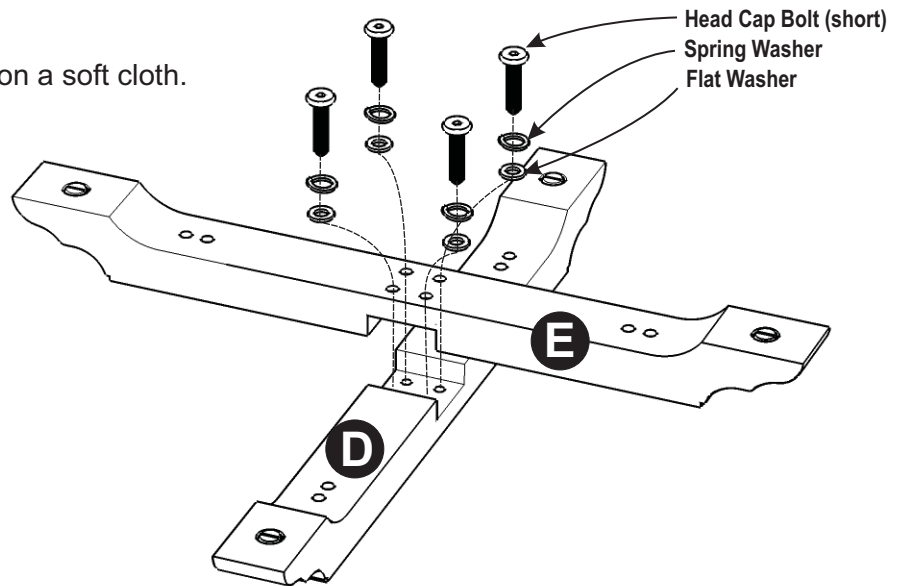
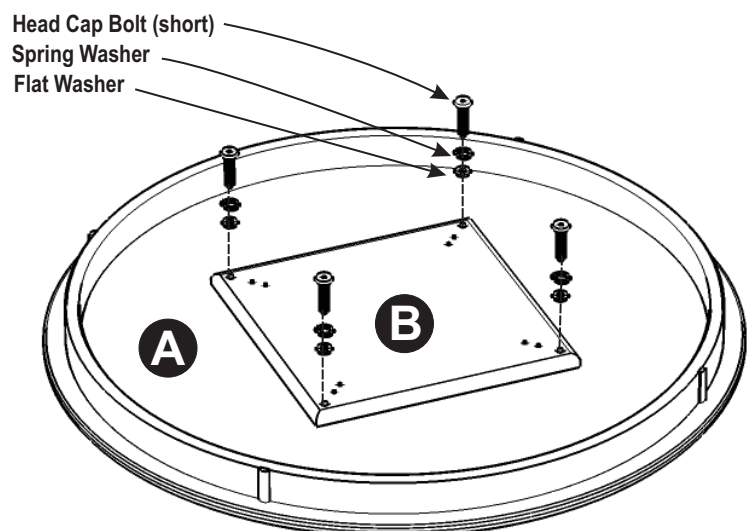


Figure 1



STEP 2

Attach base unit to Posts (C) using Flat Washers, Spring Washers and Head Cap Bolts (long).



STEP 3

Place Top (A) upside down on a soft cloth.

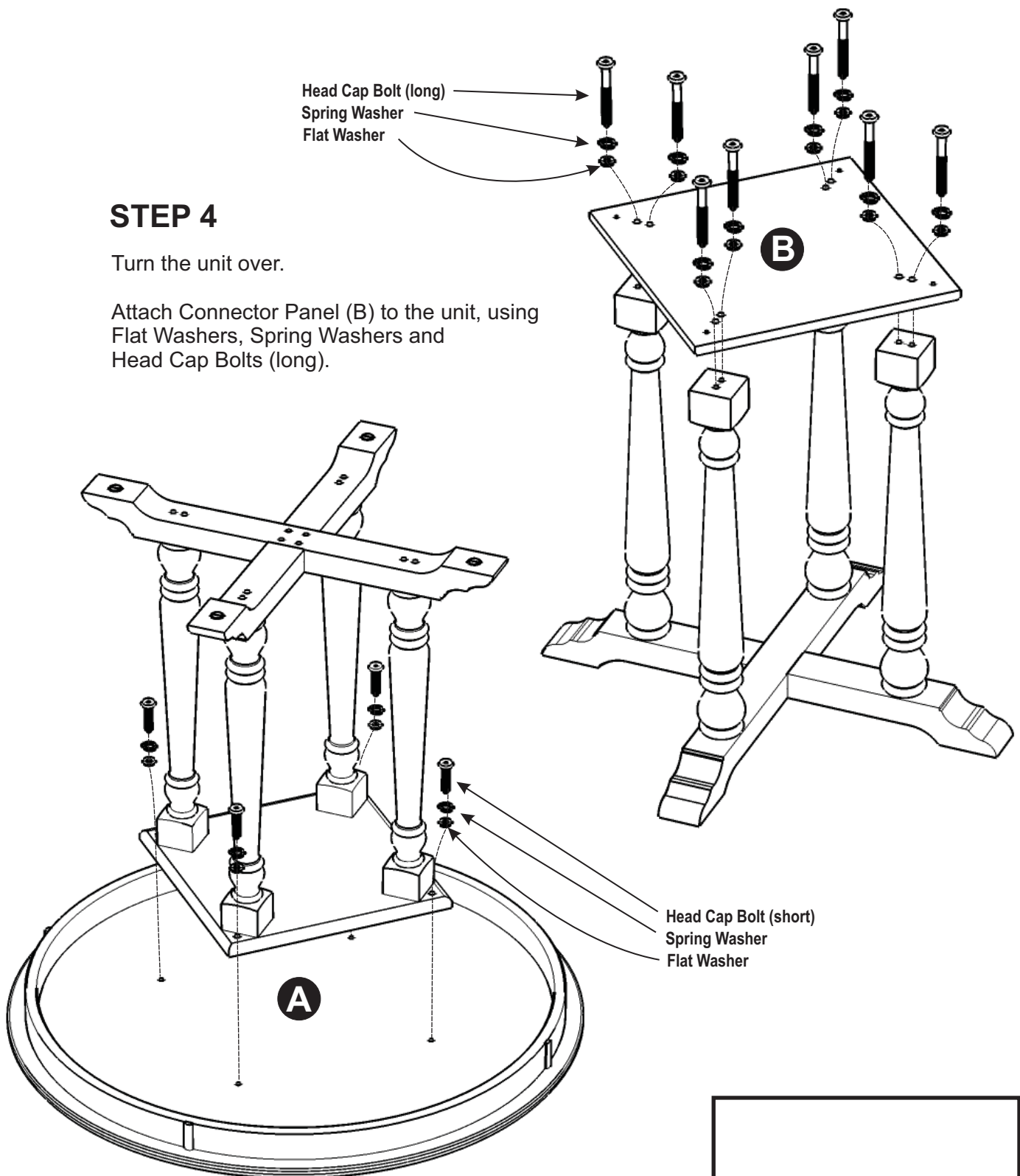
Remove Connector Panel (B) from Top (A) by loosening and removing Head Cap Bolts (short), Spring Washers and Flat Washers using Hex Wrench.

Note: These Head Cap Bolts (short), Spring Washers and Flat Washers will be used in Step 5. DO NOT DISCARD

STEP 4

Turn the unit over.

Attach Connector Panel (B) to the unit, using Flat Washers, Spring Washers and Head Cap Bolts (long).



STEP 5

Attach the unit to Top (A) with Flat Washers, Spring Washers and Head Cap Bolts (short).

Turn the assembled unit to its upright position.

To level the unit, adjust the adjustable levelers on the bottom of unit. (see Figure 2)

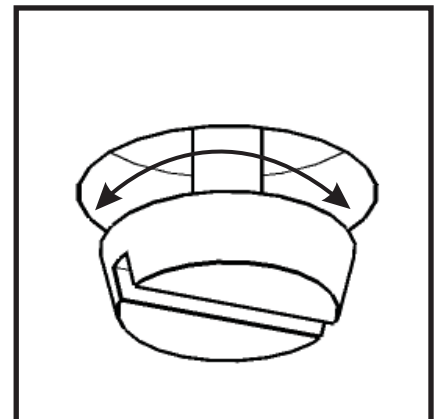


Figure 2